



Generic Instructions for H323 Connections Quick Start Guide

- *From your computer open <http://evo.caltech.edu>
- Login using your account or dedicated room account

Before joining a meeting select Videoconference Client from the pull down menu under Configuration

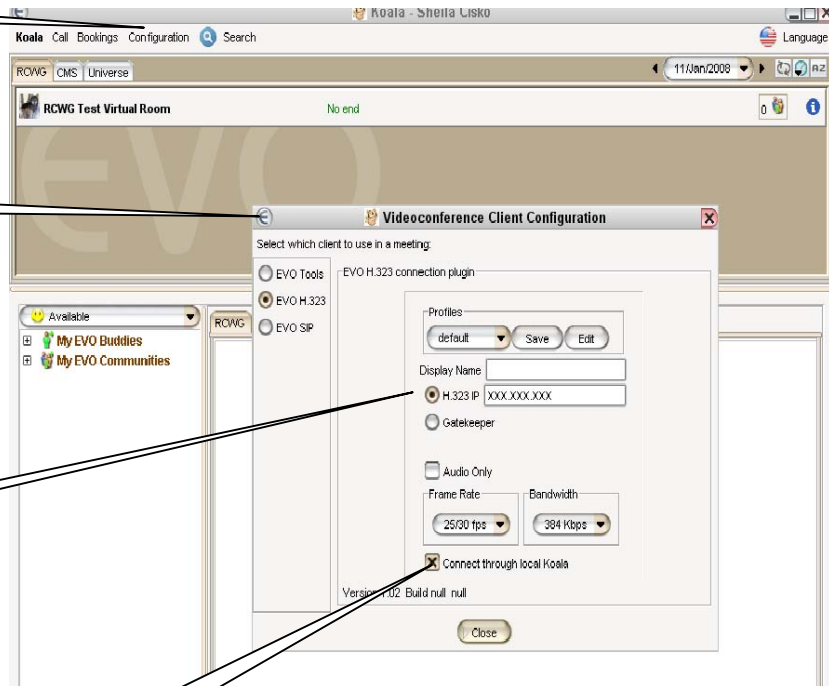
Using this page as a guide enter the settings shown.

Replace XXX.XXX.XXX with your IP address

Close window.

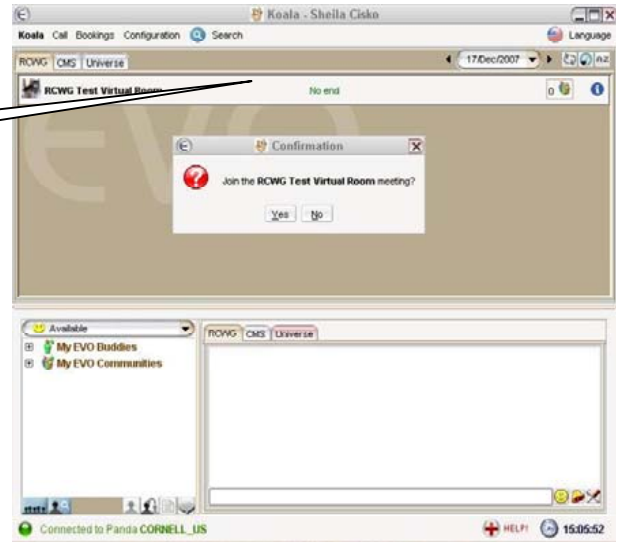
* If your PC is wireless uncheck "Connect through local Koala"

Note: there may be firewall issues and other limitations using this method.



- Find your meeting

Click to join



- Meeting view

 A screenshot of the Koala meeting view interface. The main video area shows a close-up of a koala's face. A small participant window in the top right shows 'Sheila Cisko'. Below the video is a control bar with icons for 'H.323', 'mute', 'video', 'chat', and 'Leave Meeting'. A chat window at the bottom right displays a message: '[15:12:10] Sheila Cisko this is the chat window'. The bottom status bar shows 'Connected to Panda CORNELL_US', a 'HELP!' button, and the time '15:05:52'. Several callout boxes with lines pointing to specific UI elements are present:

- 'Exchange files' points to the top right corner of the video area.
- 'Meeting participants' points to the small participant window.
- 'Hang up' points to the 'Leave Meeting' button.
- 'Redial' points to the 'H.323' button.
- 'Watch all videos or only speaker' points to the video control icons.
- 'Chat window' points to the chat area.
- 'Leave meeting' points to the 'Leave Meeting' button.
- 'Record meeting' points to the top right corner of the video area.